



#### DINING ROOM

Designer Lauren Buxbaum Gordon showed the owners of this Edina, Minnesota, home 30-plus wall-coverings before landing on this playful tropical motif by [Pierre Frey](#). **Chairs:** [Gubi Beetle](#), in [Pierre Frey](#) fabric. **Chandelier:** vintage, [Ghili](#). **Table:** vintage, [Old Plank](#). **Curtains:** [Zirlin Interiors](#), in [Mila Blake](#) fabric.

#### MUDROOM

The custom cabinets have built-in storage for everything from backpacks and coats to off-season miscellanea and shoes. "We added brass grille fronts for ventilation," says Buxbaum Gordon. **Paint:** White Dove, [Benjamin Moore](#). **Light:** [Etsy](#). **Flooring:** [Granada Tile](#). **Hardware:** [Aho](#), through [Chicago Brass](#). **Cabinets:** [Olson Cabinets & Woodworking](#).



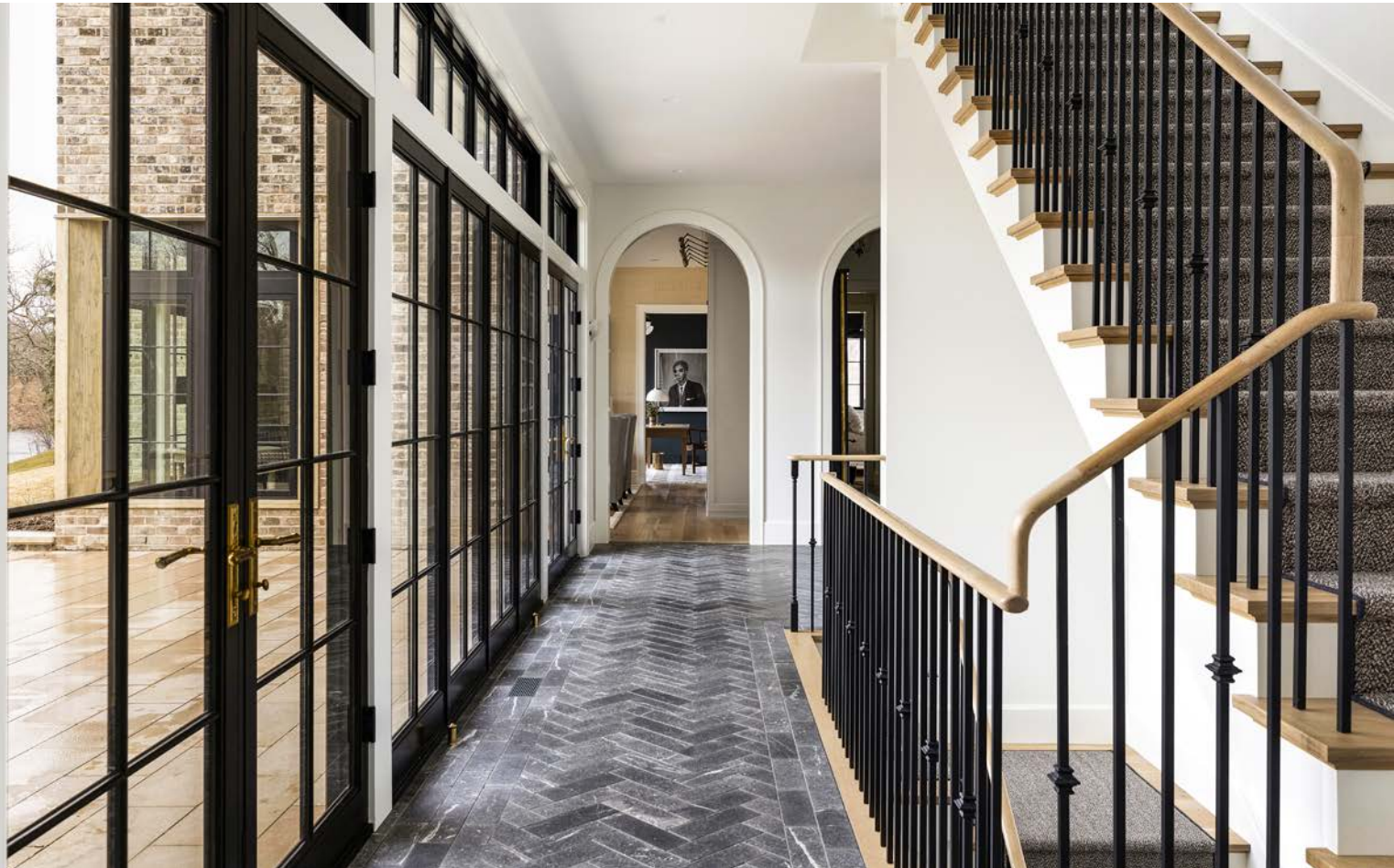
# DOWN to EARTH

It's not easy to make 12,000 square feet feel friendly and grounded—but one design team managed to pull it off.

interior designer [Nate Berkus Associates](#) / writer [Allison Duncan](#)  
photographer [Spacecrafting Photography](#)

## HALLWAY

With floor-to-ceiling doors that open to Mirror Lake, this scenic corridor connects the kitchen and family room.  
**Doors:** Loewen Windows. **Spindles:** Archipelago Metalworks. **Handrail:** custom.



# BIG HOUSES RARELY FEEL INTIMATE...

**BUT THAT'S EXACTLY HOW LAUREN BUXBAUM GORDON,** partner at Chicago-based Nate Berkus Associates, describes this Edina, Minnesota, new build she designed for a young family (plus two dogs). "When we visited for the install, they had notebooks sitting on the table so the kids could share how their day went," she says. "**You really feel the sense of togetherness in this home.**"

Located on about two and a half acres facing Mirror Lake, the 12,000-square-foot property is a showcase of sustainable materials. In the kitchen, Buxbaum Gordon incorporated rift-sawn natural white oak flooring along with locally sourced, low-maintenance quartz countertops by Minnesota-based Cambria. "It's all eco-friendly," she explains. "I was super excited to use reclaimed beams from an old barn that had fallen down [for ceiling beams]... Shopping local was important to us."

The daughter of two renowned antiques dealers,

Buxbaum Gordon also breathed new life into vintage accessories and furnishings—like pairing a standout Italian crystal chandelier circa 1860 with a rustic table and eclectic black-and-white wallpaper in the dining room.

With young boys, the sprawling floor plan required smart divisions. There are wide halls, cuddle-ready seating areas, and rooms for everything from crafts and music to sports and studying. "Lauren and I are both parents now with young children, and that changes you, obviously," says the firm's founder, Nate Berkus. "As designers, it has helped us better evolve our understanding of how a family needs to live."

A designated study for the kids, for example, includes a conversation sofa and a long bench seat under the window. "We did mohair on the bench intentionally, instead of synthetic or outdoor, as it's the most indestructible of natural materials," Buxbaum Gordon says. "It can take a lot of wear and tear." One of the countertops in the kitchen is a few inches lower than the other, she adds, "so the client doesn't have to stand on her tiptoes when baking."

Six months after the project stalled during COVID, Buxbaum Gordon and her team were finally able to visit in person. Storage baskets held the kids' musical instruments, and uplifting quotes were scribbled on clear tape adhered to the hallway subway tiles. "This really is such a special house for these kids to grow up in." ■



**EN SUITE BATH**  
 Buxbaum Gordon relied on a soothing color palette of neutrals that highlight both lake and golf course views. **Chandelier:** vintage, **Istdibs**. **Pendants:** Schoolhouse. **Mirrors and vanity:** custom, **IKstudios**. **Hardware:** Alexander Marchant. **Runner:** Pampa. **Flooring:** Ann Sacks.

**ENTRYWAY**  
 Arched doorways keep the design from leaning too modern. **Paint:** Snowfall White, Benjamin Moore. **Vase:** Redefined Decor. **Table:** vintage, **Istdibs**. **Light fixtures:** Apparatus. **Ottoman:** RH. **Flooring:** Artistic Tile.



**OFFICE**  
 The homeowner "asked for lounge chairs versus guest seating so he could sit with his kids," Buxbaum Gordon explains. **Paint:** Studio Green, Farrow & Ball. **Pendant:** Obsolete. **Ottoman:** RH, in Pierre Frey fabric. **Chair:** Lawson-Fenning. **Desk:** custom, **IKstudios**. **Desk chair:** vintage, **Istdibs**.

## The Right Way to Do Subway Tile

Buxbaum Gordon was afraid plain subway tile would feel too stark. “The clients kept stressing nothing too fancy,” she recalls. Instead, she turned to glazed bricks, which are the same shape but have a rustic finish and less shine. A contrasting grout highlights the imperfections in the surface of each tile to make them look even more warm and architectural.

### KITCHEN

Waterworks tile imparts “a layer of architecture, especially with the contrast charcoal grout,” explains Buxbaum Gordon. **Cabinet paint:** Skimming Stone, Farrow & Ball. **Faucet:** Waterstone. **Perimeter countertop:** Calacatta, Chadwick’s Surfaces International. **Island countertop:** White Cliff, Cambria. **Counter stools:** RH Modern, in Brentano fabric. **Light fixtures:** Hector Finch. **Fridge and freezer:** Sub-Zero. **Induction stove-top, wall oven, and steam oven:** Wolf.

> **STUDY**

Instead of individual desks, the kids of the house have this communal second-floor space to do schoolwork. **Window seat:** [MM Design Textiles](#) mohair. **Paint:** Chelsea Gray, [Benjamin Moore](#). **Light fixture:** [CB2](#). **Chest:** [RH](#). **Lamps:** [Jamie Young Co](#). **Sofa:** custom, [Estudio Furnishings](#), in [ALT for Living](#) fabric. **Sconce:** [CB2](#). **Rug:** [Annie Selke](#).

▼ **LIVING ROOM**

Despite soaring 20-foot vaulted ceilings, the room feels cozy thanks to an [FJ Hakimian](#) grasscloth wall-covering. **Paint:** Snowfall White, [Benjamin Moore](#). **Chandelier:** [Jamie Young Co](#). **Mirror:** vintage. **Istdibs.** **Sconces:** [Maison Jansen](#), [Thomas Brillet, Inc.](#) **Mantel:** [Jamb](#). **Chair:** [John Himmel](#). **Coffee table:** vintage, [Istdibs](#). **Rug:** custom, [ALT for Living](#). **Sofa:** custom, [Estudio Furnishings](#).



**BREAKFAST NOOK**

The family requested a not-too-big round table for ease of conversation. **Light fixture:** [Roman and Williams Guild](#). **Table:** custom, [IKstudios](#). **Chairs:** [Lawson-Fenning](#). **Sconce:** [Obsolete](#). **Art:** client's own.

