

ULTIMATE KITCHEN MAKEOVER GUIDE

Sunset

25 GLORIOUS WINTER ESCAPES

KORAKIA PENSIONE,
PALM SPRINGS

EASY
(& HEALTHY!)
ONE-DISH
MEALS

YOSEMITE
WITHOUT THE
CROWDS



8 steps to your
perfect
outdoor room



VISIT US AT SUNSET.COM

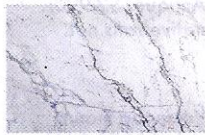
A STRONG FINISH

Materials matter. Check out the latest natural looks for cabinets, counters, and drawers.

SHOP

What's the next granite?

Every designer we talked to agreed: Quartzite is the new "it" material, especially if you want the look of marble with less care and lower cost. "Grey Goose" (similar to Calacatta, below) is Los Angeles designer Ana Henton's (*mass-arch.com*) favorite variety. "I wish I could keep it a secret forever," she says. Available at *Daltile (daltile.com)*.



Calacatta Quartzite Q721 Looks like marble, with thinner veining.



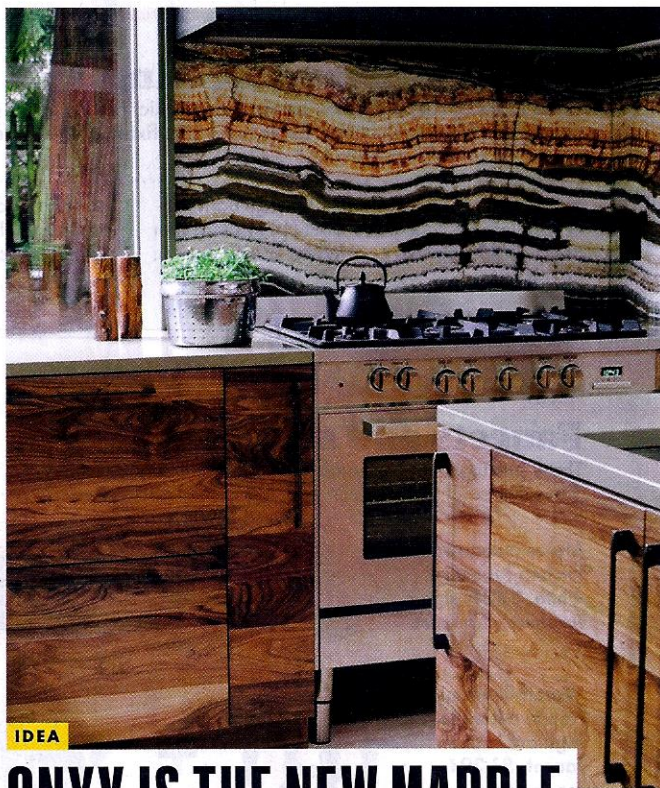
Blue Fusion Q722 A swirling sea of blues and greens.



Ocean Tide Q716 Blue strokes that look like brush marks.



Crystallize Q705 Cream with ribbons of grey and gold.



IDEA

ONYX IS THE NEW MARBLE

Call it "onyxpected": With marble dominant in the kitchen, it's easy to forget there are other natural stones available. Onyx, used by designer Christina M. Tello (*tellointeriors.com*) as a backsplash in her Portland kitchen, is a piece of art—no embellishment required. The veining in this slab looks like petrified wood, but you'll find golden and red patterns as well. See *msistone.com* for a dealer.

IDEA

Just add leather

We can't get enough of leather cabinet pulls. This one will only add more character as it ages.



➤ Sling Leather Pull small in warm beige. \$15; *knoll.com*.



SHOP

PAGE 43

Find the tiles in our opening photo: **Classic Field** in multiple shapes and colors; **Dimensional Bowtie**, *heathceramics.com*. **Chinois Field Tile** in Lantern; **Benton Braid** in Athens Silver Cream and Carrara/White Thassos; **Benton Circles** in Calacatta Borghini; **Carved Stone Field Tile** in Shan; **Modern Field Tile** in Ribbed Moon and Split Right and Ribbed Triangle, **Arabesque** in Athens Silver Cream; **Selvaggio Mosaics** in Bianco; **Frame Hexagon Field**; **Dessiner** in Epi, Ligne, and Feutre, *annsacks.com*. **Star & Cross** in large; **Paseo**, *fireclaytile.com*. **Duquesa Fatima** in Mezzanotte; **Shingle** in Frost Crackle; **Tilt** in Clover Mosaic, *walkerzanger.com*. **Midnight** in cement tile, *granadatile.com*. **Hex Blank** in Dawn, *designvidal.com*. **Hardware**, *rejuvenation.com*. ▲



"We use a lot of NatureCast Concrete for countertops. It's lighter than standard concrete and has epoxies and resins to make it more durable and stain-resistant."

—LEELA BRIGHTENBURG, *BRIGHTDESIGNLAB.COM*