



GRANADA TILE

LOOK BOOK

2019 Volume Nine

17 NEW TILE DESIGNS

GRANADA TILE

EXPLORE OUR LOOK BOOK

We invite you to explore the delightful world of color and form that Emma Gardner and Granada Tile have created just for you.

ENJOY.

Introducing the work of EMMA GARDNER.

Granada Tile is proud to introduce award-winning designer Emma Gardner's new Encaustic Cement Tiles, part of Granada's best selling Echo collection. Hand-crafted in Nicaragua, each tile embodies the centuries old patterned tile aesthetic.

Born in Kyoto, Japan and raised in New York City, Emma weaves diverse cultural strands into a powerful and unique voice. As with her Mosaics, also available from Granada Tile, this collection embodies her signature style that is flexible in both form and color, allowing for a broad range of moods — from serenity to exuberance.

Gardner has received numerous accolades including Interior Design magazine's Best of Year, IIDEX/Neocon Innovation and Neocon Gold Awards for her rug and fabric designs. Her work adorns premiere health care facilities, the homes of numerous celebrities and titans of industry, and her designs have been specified into leading global brands by many Interior Design Hospitality Giants including Rockwell Group, ForrestPerkins, Gensler and Hirsch Bedner & Associates.

LOZENGE



Party Favor



Wheat



Midnight



BYZANTIUM



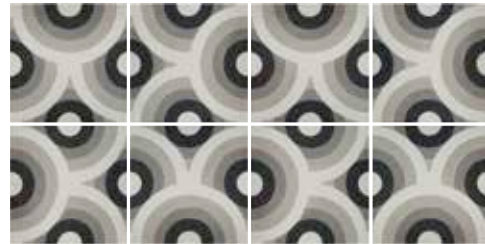
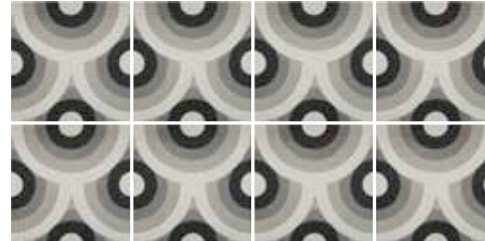
Splash



Sunlight



Noir



"Across cultures and styles, there are tiles for almost everyone. It's wonderful to be able to contribute to a conversation that has been going on for centuries but very much continues to have vibrant new life."

Quotes: Emma Gardner

DECO FANS



Toffee



Terrecotta



Smooth Sailing



BIGTOP



Midnight



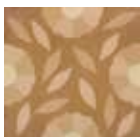
Samurai



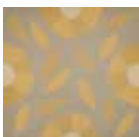
Wine & Chocolate



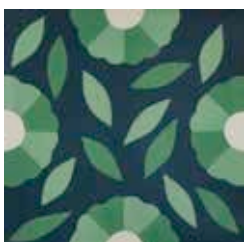
COSMOS



Doe



Butterscotch



Prep City





"The tiles in this collection take inspiration from wide ranging cultures, to the visual satisfactions of geometry, and to nature – that endless well-spring of form, variety, and color."

PARQUET



Butterscotch



Grey Matter



Pale Aqua



MODERNITY No. 1



Honeydrop



Sophisticate



Sweetheart



Idyll



MODERNITY No. 2



Sophisticate



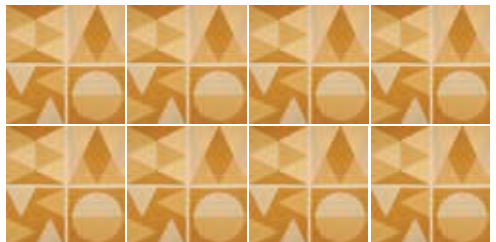
Idyll



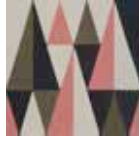
Sweetheart



Honeydrop



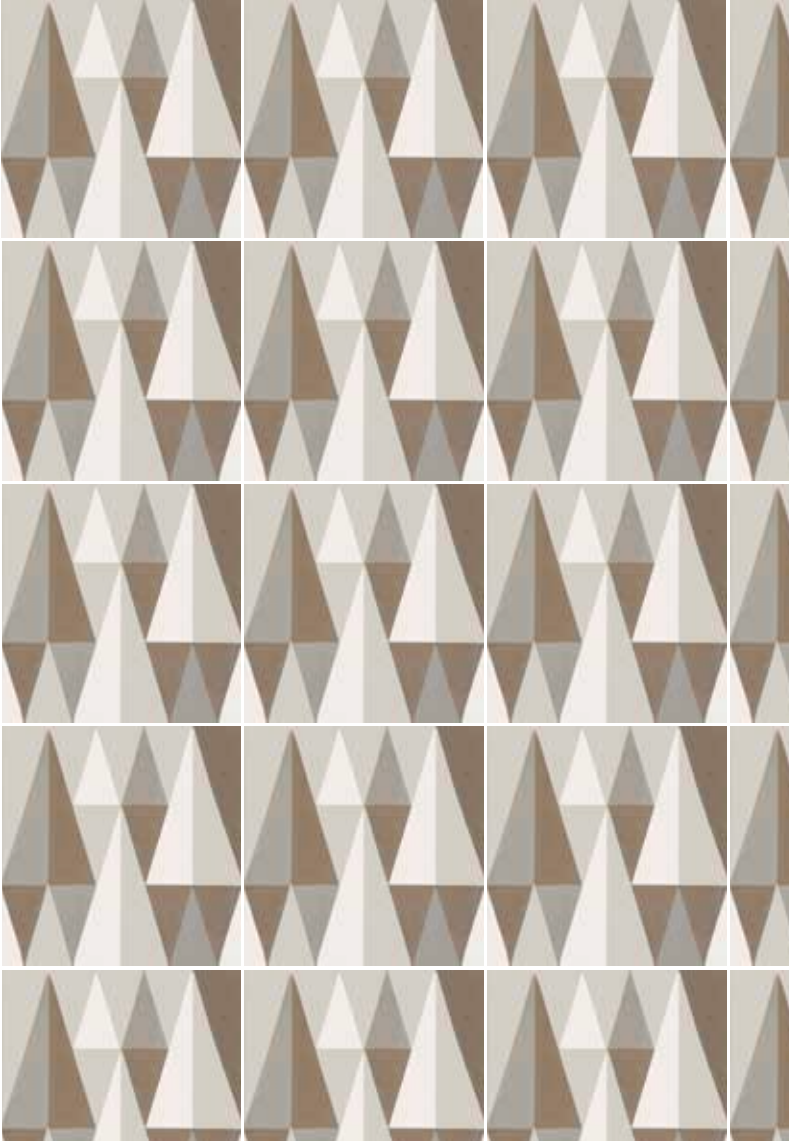
PINE FOREST



Good 'n Plenty



Marine Layer

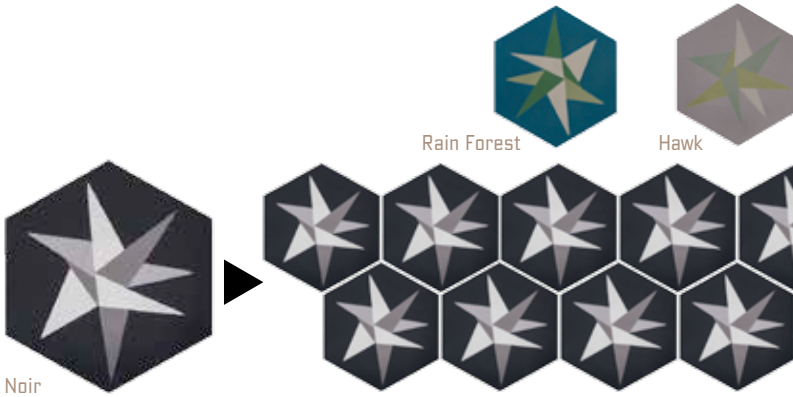


Meadow

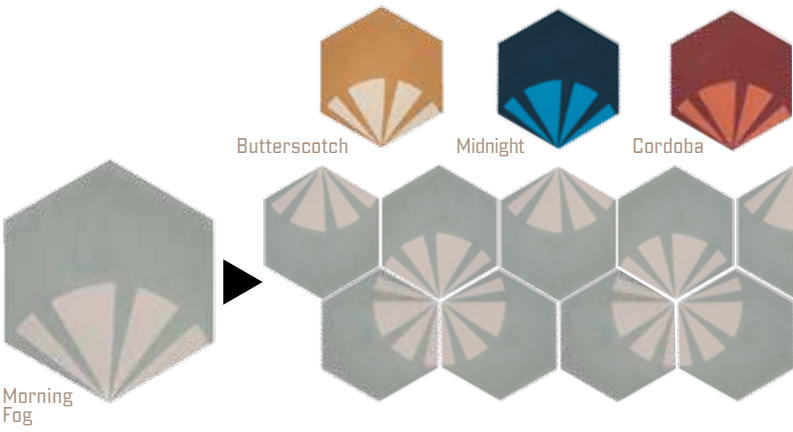
"I love the challenge
with tiles of working at
small and large scales
at the same time."



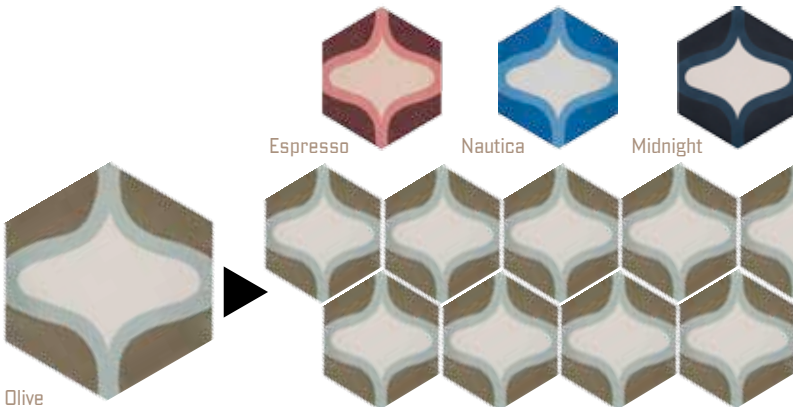
FREE HEX



GINKGO



SOFT HEX



KOI



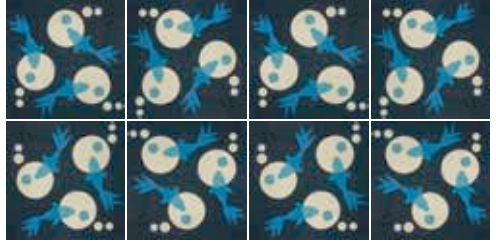
Blue Sea



Midnight



Aqua



PARASOL



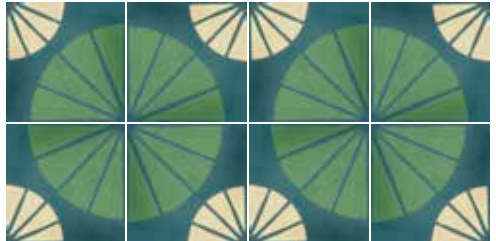
Blue Skies



Terrecotta



Rain Forest



LANTERN



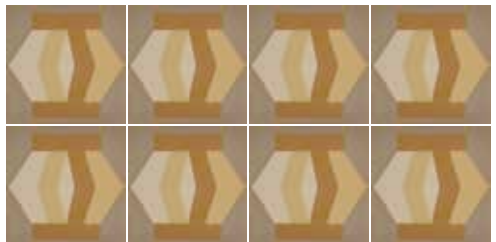
Brick



Prep City



Golden Glow



EGG CUP



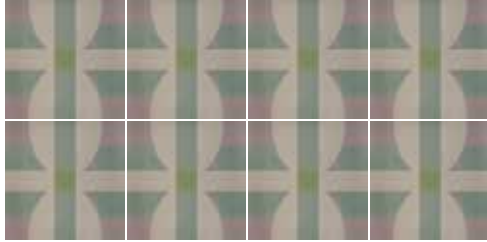
Caramel



Clear Skies



Hawk



SHATTER



Golden Rod



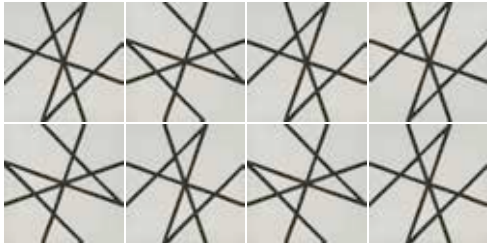
Rose Gold



Blue Bell



Black & White



"There is something elemental about using a few solid colors to create designs that are interesting without being busy and easy to get while still having originality."

HYDRANGEA



Fern



Sailor Boy



Mid-Century





Contact us: sales@granadatile.com

213.788.4238

Find Granada Tile at all your favorite social media sites:



WWW.GRANADATILE.COM